



FLEX

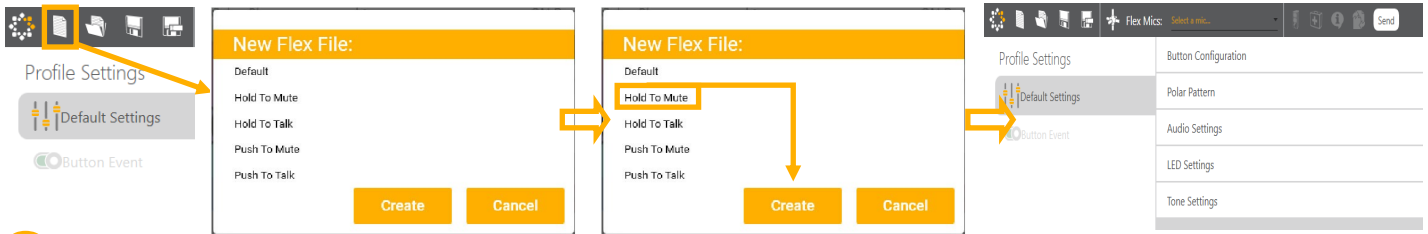


Create. Save. Open.

Flex Designer is capable of creating custom configuration profiles for connected Flex Microphones. As part of the configuration process, Flex Designer allows users to create, save, and open saved profiles within the software so that previous configuration settings can be edited and re-applied as needed.

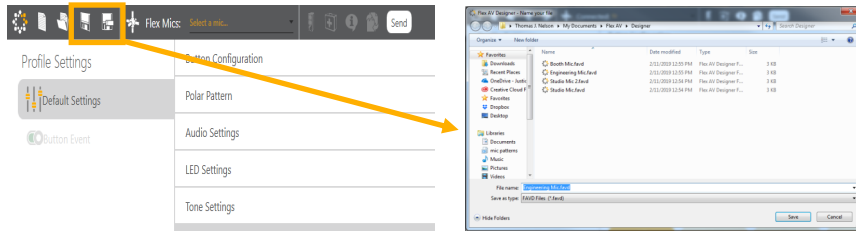
Create

Once connected, Flex Designer will allow for custom profile configuration of the Flex Microphone. To start this process select 'New File' from the toolbar. This will prompt the New File window to open. Select one of the options from the pop up, this will determine button function. Once an option has been chosen this pop up will disappear and custom configuration can commence.



Save

Once custom configuration profile is complete and sent to the Flex Microphone it cannot be retrieved from the microphone. To keep this custom profile for reuse, it must be saved to a file. To save a profile select 'Save File', or 'Save File As' to rename the profile, enter the desired file name and click 'Save'.



Open

To open a saved custom configuration profile select 'Open File' and choose from the saved Flex Microphone profiles. The chosen profile will auto load into Flex Designer and can be edited or sent to a microphone for use. All saved and opened profiles can be found at: Computer>My Documents>Flex AV>Designer

